



MAGNIFIERS & MORE

**LOW VISION
Adaptive Aids Catalog**

Fifth Edition

www.magnifiersandmore.net

ABOUT US

Magnifiers & More is committed to helping those with a vision impairment continue to maintain an independent lifestyle.

We hope this catalog will help with your everyday activities of living.



This catalog is dedicated in loving memory to our Grandmother, Margaret K. Allen, who had Macular Degeneration.

“When a man loses his sight he does not know himself what he can do, he needs someone with experience to teach him.”

~ Helen Keller

Front Cover Picture: Our CEO (Canine Executive Officer) is Murphy, a Golden Retriever. He is a therapy and service assistant dog. Look for his paw stamp of approval throughout the catalog.



To order call 440-946-3363 www.magnifiersandmore.net

TABLE OF CONTENTS

AIDS FOR TV	Page 4
WRITING AIDS	Page 6
LARGE PRINT AIDS	Page 8
TALKING ITEMS	Page 11
TALKING WATCHES	Page 15
MAGNIFIERS	Page 16
DISTANCE MAGNIFIERS	Page 33
ELECTRONIC MAGNIFICATION	Page 36
MAGNIFYING MIRRORS	Page 38
MOBILITY AIDS	Page 41
LIGHTING	Page 41
GLARE CONTROL SUNGLASSES	Page 45
MISCELLANEOUS AIDS	Page 47
ORDER FORM	Page 50
RETURN POLICY	Page 51

To order call 440-946-3363 www.magnifiersandmore.net

AIDS FOR TV



LARGE NUMBER TV REMOTE CONTROL



Easy to see and use universal TV remote control. 3/4" lighted push buttons. Can control up to four devices. Lightweight 11 oz. Impossible to lose. Operates on 4 "AA" batteries (**not included**).

TVLNR

COST \$39.95



BIG BUTTON REMOTE CONTROL

Easy to see universal TV remote. Large numbers make for easy use. Controls up to four devices. Measures 9-1/2" long. Operates on 2 "AA" batteries (**not included**).

TVRBB

COST \$28.95



SIMPLE BIG BUTTON REMOTE CONTROL

Easy to use and see. This universal remote is strictly for the TV. Six buttons: on/off, mute, volume up, volume down, channel up, channel down. Operates on 2 "AA" batteries (**not included**).

TVPAL

COST \$19.00



MAX TV GLASSES ~ ESCHENBACH

Worn just like glasses, they are light and comfortable. Magnifies 2.1x with adjustable focus wheels at the temples. Focus on distances of 3 feet to infinity. For distance use only. Not for driving.

TVGL

COST \$145.00

To order call 440-946-3363 www.magnifiersandmore.net

AIDS FOR TV



TV AMPLIFIERS

Clarity® Power™ technology and 50 dB of amplification, the TV Amplifier helps you to hear the TV clearly without disturbing others.

Features:

- Compatible with TVs, stereos, MP3 players and public IR systems
- Telephone call notification: Connect your telephone line to the amplifier and receive notification through the headset when your phone is ringing
- Adjustable volume, tone and balance
- Lightweight wireless headset with automatic shutoff
- Two rechargeable NiMH batteries (8 hours total listening time; 4 hours per battery)
- Includes external TV microphone, AC adapter, two (2) audio cords and headset carrying pouch

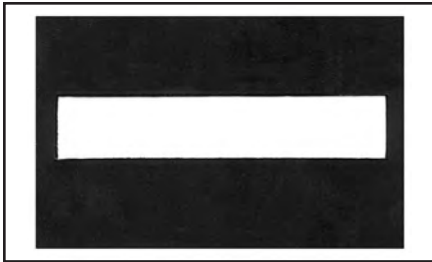
TVAMP

COST \$99.99



To order call 440-946-3363 www.magnifiersandmore.net

WRITING AIDS



SIGNATURE GUIDE

Black plastic square with cut-out for signature area. Makes it easy to feel and see where to write.

WASG - Small

COST \$1.30

WASGL - Large

COST \$1.95

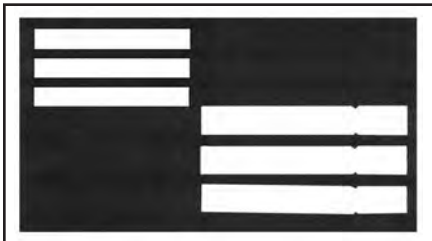


CHECK WRITING GUIDE

Black flexible plastic rectangle has cut-out boxes for standard check information. Slots for date, amount, and signature. Makes it easy to feel and see where to write check information.

WACG

COST \$2.25



ENVELOPE WRITING GUIDE

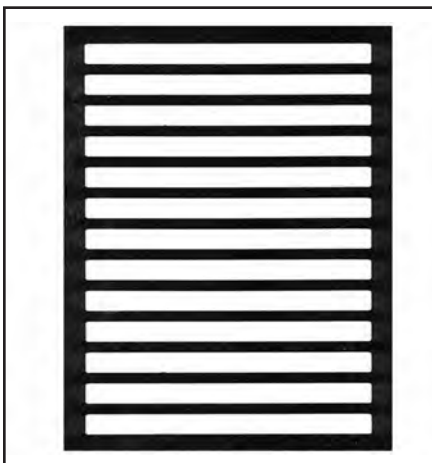
Black flexible plastic rectangle has cut-out boxes for standard envelope information. Cut-out boxes for return address and recipient address. Makes it easy to feel and see where to put envelope information.

WAEG - Standard

COST \$1.95

WAEG - Business Size

COST \$2.95



LETTER WRITING GUIDE

Black flexible plastic 8 1/2" x 11" sheet. Features a cut-out for each line. 1/2" opening for each line. Perfect for helping to write in a straight line. Makes it easy to feel and see where to write.

WALG

COST \$5.35

To order call 440-946-3363 www.magnifiersandmore.net

WRITING AIDS



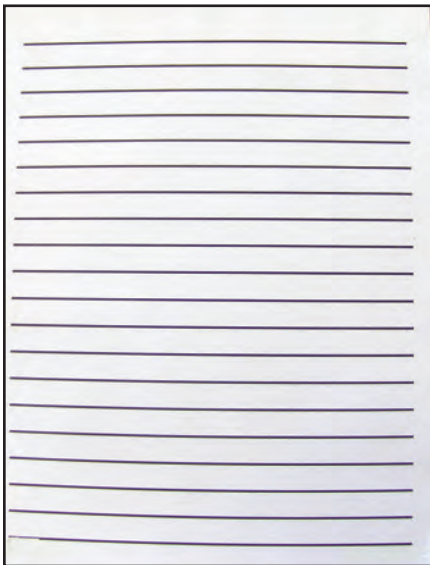
EASY TO READ 20/20 PEN



This special pen provides bold, easy to read writing. Won't bleed through paper. Bold black ink dries instantly. Favorable writing aid for the visually impaired.

WA2020

COST \$1.25 per pen



BOLD LINED PAPER- WHITE

8-1/2" x 11" bold lined paper. Black lines are 3/4" apart on white paper. 100 sheets per tablet.

WABLPW

COST \$5.95

BOLD LINED PAPER- YELLOW

8-1/2" x 11" bold lined paper. Black lines are 3/4" apart on yellow paper. 100 sheets per tablet.

WABLPY

COST \$6.95



BOLD LINE TABLET

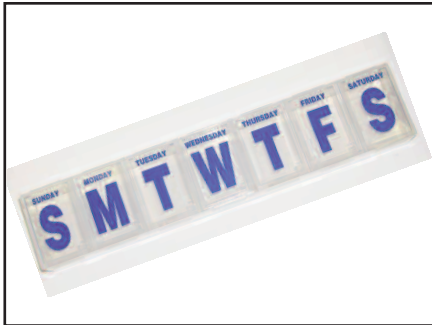
5" x 7" note pad with bold black lines. Lines are 3/4" apart on white paper. 100 sheets per tablet.

WABLPS

COST \$3.95

To order call 440-946-3363 www.magnifiersandmore.net

LARGE PRINT AIDS



XTRA LARGE PRINT PILL ORGANIZER

Pill organizer that measures 11" long by 2-1/2" high and 1-1/4" wide. Day of the week letter 1-1/4".

LPXPO

COST \$4.95



LARGE PRINT CALLER ID

Receives and displays name, number, date and call time. Also displays information of call waiting. 4 buttons: flash, delete, forward review, backward review. Viewing area is 1-1/2" x 3".

AC adaptor included.

LPCID

COST \$40.00



LARGE PRINT DATE PLANNER

Spiral bound and opens to 11" x 17". Extra large easy-to-read dates. Monthly notes/appointments pages with bold lines 1/2" apart. Laminated covers with pockets. Size closed 9" by 11". Bold 20/20 pen included.

LPDP

COST \$13.00

To order call 440-946-3363 www.magnifiersandmore.net

LARGE PRINT AIDS



LARGE PRINT ADDRESS BOOK

Spiral bound book. Holds up to 500 address listings. Three address listings per page. Includes 20/20 pen. Durable covers with inside front and back pockets. Alphabetical tabs and ample room to fill in information. Size 7-1/2" x 9-1/2".

LPAB

COST \$16.00



LARGE PRINT CHECK REGISTER

Spiral bound register helps keep better control of check recording. Contains spaces for 14 entries per full page. Size 5" x 9".

LPCR

COST \$8.00



LARGE PRINT PLAYING CARDS

Standard size cards with 1-1/2" numbers and letters.

LPCC

COST \$4.95



LARGE PRINT BINGO CARDS

Easy to read jumbo numbers. Lightweight cardboard card. 8" x 9-1/4".

LPBC COST \$1.29 each or 25/\$30.00

To order call 440-946-3363 www.magnifiersandmore.net

LARGE PRINT AIDS



ALARM CLOCK RADIO

Giant green LED display. Numbers are 2" high. Snooze button, AM/FM, dimmer switch, electrical cord with 9V battery back up.

(Battery not included.)

LPACR

COST \$25.00



BIG BUTTON PHONE

Desk/Wall mountable speaker phone. Light flashes when ringing, stores up to 13 phone numbers, redial button. Numbers are 1" high.

LPBBP

COST \$30.00

Available in Black or White Color



LARGE PRINT CALENDAR



Bold large print numbers that are one inch big. Opens to 22" high by 17" wide. USA holidays are marked. Plenty of room to write.

LPC

COST \$10.50

To order call 440-946-3363 www.magnifiersandmore.net

TALKING ITEMS



TALKING ALARM CLOCK

Triangle shaped with white face. Large black numbers and black hands. Second hand in red. Push button on top to tell the time. Can be set to tell hourly time and alarm can be set. Operates on two "AA" batteries. **(Battery not included).**

TIACL

COST \$25.00



TALKING KEY CHAIN CLOCK



Handy clock that displays time digitally and announces time when button is pressed. Alarm clock can be set and hourly time report. Compact size 2-1/4" long by 1-1/2" wide. **(Battery included).**

TIKCC

COST \$15.00



TALKING BODY WEIGHT SCALE

Automatically turns on when you tap it. Announces your weight clearly and accurately. Automatically turns off when you step off of it. Talking feature can be turned off. Weight is displayed on screen.

TIBWS

COST \$65.00

To order call 440-946-3363 www.magnifiersandmore.net

TALKING ITEMS



BLOOD PRESSURE MACHINE

This blood pressure unit announces both blood pressure and pulse rate.

Automatically inflates and deflates arm cuff. Unit includes meter with standard adult size arm cuff (fits circumference 7-1/2" to 12-1/2"), plus large print and audio cassette instructions. Measures 8 1/4" x 6" x 1-3/4". Requires 4 "AA" batteries **(not included)**.

TBP

COST \$135.00



THERMOMETER

Talking clinical thermometer is accurate within 0.3 degrees Fahrenheit. Can be used orally, rectally or underarm. Retains memory of the last recorded temperature. Clear female voice announces the temperature automatically and repeats it once again. Additional repeat announcements can be obtained by pushing a button. **(Battery included)**.

T THERM

COST \$16.95

To order call 440-946-3363 www.magnifiersandmore.net

TALKING ITEMS



MOSHI CLOCK

This talking clock is completely voice controlled. The Moshi clock is set through voice commands. Information such as current time, alarm time and the date, are available by just asking for it.

Other features include:

- 3 different alarm sounds
- Sleep sound of your choice for 5 minutes
- Night light
- Help feature
- Operates on AC/DC power (included) or uses 3 "AAA" batteries

Measures 7.5" x 3.25" x 4.5"

TCMOSH

COST \$48.95



MINI MOSHI CLOCK

This mini Moshi talking clock runs on batteries and is convenient for traveling or moving from room to room. Same features as the Standard Moshi (see above).

TCMMOS

COST \$25.00

To order call 440-946-3363 www.magnifiersandmore.net

TALKING ITEMS



TALKING ATOMIC CLOCK/CALENDAR

Talking Atomic Clock/Calendar announces time and date in a very clear female voice. Automatically sets the time during time changes. Optional alarm and hourly chime. Uses 2 "AA" batteries **(not included)**. Measures 4-1/2" x 5-1/4" face. 2-3/4" deep base.

TCATOM

COST \$52.00



ATOMIC WATCH WITH LEATHER BAND

Black leather band and stainless steel case. One touch time announcement; hold down two buttons for the date and day of the week. Atomic radio control, so never worry about adjusting for time changes. 1-1/4" diameter face with extra bold black hands. Uses watch battery. **(Battery included)**.

TWATOM

COST \$59.95

To order call 440-946-3363 www.magnifiersandmore.net

TALKING WATCHES



TALKING WATCHES

Talking watches available in many options!

One button watch tells time when button is pressed.

Four button watch tells: time, date, hourly announcement. Can also set up to 4 alarms, 8 different alarm sounds to choose from.

Available in gold or silver, stretch band or leather buckle band. Choice of black numbers on white face or white numbers on black face.

Gold Stretch Band: White Face Black Numbers 1 Button **TWGSWF1**

Gold Stretch Band: Black Face White Numbers 1 Button **TWGSBF1**

Gold Stretch Band: White Face Black Numbers 4 Button **TWGSWF4**

Gold Stretch Band: Black Face White Numbers 4 Button **TWGSBF4**

Silver Stretch Band: White Face Black Numbers 1 Button **TWSSWF1**

Silver Stretch Band: Black Face White Numbers 1 Button **TWSSBF1**

Silver Stretch Band: White Face Black Numbers 4 Button **TWSSWF4**

Silver Stretch Band: Black Face White Numbers 4 Button **TWSSBF4**

Gold Brown Leather Band: White Face Black Numbers 1 Button

TWGLWF1

Silver Black Leather Band: White Face Black Numbers 1 Button

TWSLWF1

Specify Male or Female Style

All 1 Button Watches

COST \$50.00

All 4 Button Watches

COST \$56.00

For a larger selection, please check out our website.

To order call 440-946-3363 www.magnifiersandmore.net

CHOOSING MAGNIFIERS



HOW TO CHOOSE A MAGNIFIER

Many factors are required in determining the proper magnifier:

- Which one will most suit your requirements?
- Which one is the easiest for you to see with?
- Which one is the easiest for you to use?
- What task are you attempting to accomplish with the magnifier?

It is not uncommon to need several different power/types of magnifiers. The proper magnifiers can help to maintain independence and see better.

“Bigger is Better.” Does not apply when it comes to magnification!

WHY? The largest magnifier is not the most powerful. The power (amount of magnification) of a lens governs its size. The stronger the magnification the smaller the lens size becomes.

It is impossible to make a high powered magnifier which covers a large area. (Though electronic devices can accomplish this.)

WHY? The power of a lens is determined by the curvature of the lens. The curved surface bends the light rays to produce an image that appears larger. The more curved a lens is, the smaller it becomes. Physically the lens becomes thicker and heavier as the curve (magnification) increases.

To order call 440-946-3363 www.magnifiersandmore.net

CHOOSING MAGNIFIERS

A stronger power magnifier (steeper curve) requires you to position the magnifier closer to the object and closer to your eye!

WHY? The stronger the power the more enlarged the viewed object becomes but the field of view is decreased (you can only see a few letters at a time). Therefore requiring you to move the magnifier or object more.

The cost of magnifiers will vary.

WHY? The type of magnifier, the material the lens is made of, the quality of the lens, and the manufacturer will contribute to the cost. Typically illuminated magnifiers will cost more than non-illuminated magnifiers. German made magnifiers, which offer superior quality optics, will cost more. Many of the better optical quality magnifiers will come with a warranty.

You cannot harm your eyes by using a magnifier.

Determining the proper magnifier requires patience, hands on practice and proper usage instructions.



To order call 440-946-3363 www.magnifiersandmore.net

MAGNIFIERS



DOMe MAGNIFIER

This dome shape magnifier gathers light and intensifies the light that passes through it, making the magnified subject clearer and 4x. There are no bulbs or batteries; just place on material. Comes with soft carrying pouch.

MD2	2" diameter	COST \$20.00
MD25	2.5" diameter	COST \$25.00
MD35	3.5" diameter	COST \$40.00
MD45	4.5" diameter	COST \$115.00
	(Special Order)	



To order call 440-946-3363 www.magnifiersandmore.net

MAGNIFIERS



ESCHENBACH DESIGNED LED ILLUMINATED HAND HELD MAGNIFIER

LED* Illuminated hand held magnifier. Ergonomic design. Portable and easy to use. Uses 2 "AA" batteries (**included**). 3 year warranty included.

MEHHA	A	3x	Magnification	COST \$125.00
MEHHB	B	3.5x	Magnification	COST \$134.00
MEHHC	C	4x	Magnification	COST \$136.00
MEHHD	D	5x	Magnification	COST \$136.00
MEHHE	E	7x	Magnification	COST \$118.00
MEHHF	F	10x	Magnification	COST \$120.00
MEHHG	G	12.5x	Magnification	COST \$130.00
			(not shown)	

* LED - (Light Emitting Diode) illumination provides a brighter, whiter light source which is preferred by low vision persons. The bulb does not have to be replaced and the battery life is increased with an LED bulb.

To order call 440-946-3363 www.magnifiersandmore.net

MAGNIFIERS



A

B

C

D

E

POWER MAG BY SCHWEIZER ILLUMINATED STAND MAGNIFIER

LED illuminated stand magnifier. Designed to be placed directly on to material and slide across using the handle. Uses 3 "AA" batteries (included).

MSCHSA	A	3x Magnification	COST \$115.00
MSCHSB	B	4x Magnification	COST \$92.00
MSCHSC	C	5x Magnification	COST \$92.00
MSCHSD	D	6x Magnification	COST \$93.00
MSCHSE	E	8x Magnification	COST \$93.00
MSCHSF	F	10x Magnification	COST \$93.00
		(not shown)	

To order call 440-946-3363 www.magnifiersandmore.net

MAGNIFIERS



A B C D E F G H I

POWER MAG BY SCHWEIZER ILLUMINATED HAND HELD MAGNIFIER

LED Illuminated hand held magnifier. Portable and easy to use. Uses 3 "AAA" batteries **(included)**.

MSCHA	A	3.5x	Magnification	COST	\$75.00
MSCHB	B	4x	Magnification	COST	\$75.00
MSCHC	C	5x	Magnification	COST	\$77.00
MSCHD	D	6x	Magnification	COST	\$70.00
MSCHE	E	7x	Magnification	COST	\$70.00
MSCHF	F	8x	Magnification	COST	\$70.00
MSCHG	G	10x	Magnification	COST	\$70.00
MSCHH	H	12x	Magnification	COST	\$70.00
MSCHI	I	14x	Magnification	COST	\$70.00

To order call 440-946-3363 www.magnifiersandmore.net

MAGNIFIERS



ESCHENBACH INCANDESCENT BATTERY HANDLE

This incandescent battery handle can be used with any Eschenbach magnification head. Portable.

Illumination: Incandescent bulb included

Power Source: Battery

(Two "C" Batteries Not Included)

Replacement Bulb: B1545

H159910

COST \$42.00



ESCHENBACH ELECTRIC INCANDESCENT BATTERY HANDLE

Electric halogen handle. The cord is at the base of the handle. This prevents the cord from being bent back on itself at the base, which can cause damage to the cord. The handle can be used with any Eschenbach magnification head.

Illumination: Hallogen bulb included 4.0 Volt

Power Source: Electric - UL Listed transformer

Replacement Bulb: B1546

H1599-304

COST \$140.00

To order call 440-946-3363 www.magnifiersandmore.net

MAGNIFIERS



ESCHENBACH LED BATTERY HANDLE

LED battery handle can be used with any Eschenbach magnification head. Portable. The most energy efficient handle available and has 2 LED bulbs. Comes with yellow LED filters.

Illumination: LED

Power Source: Battery

(Two "C" Batteries Not Included)

Bulb: LED (Never needs replacement)

H1599-40

COST \$125.00

ESCHENBACH ELECTRIC LED BATTERY HANDLE

LED electric handle. The brightest light source available for illumination in an electric handle. This handle is even brighter than the LED battery handle because it contains 3 LED bulbs and it includes a



switch above the LED's that, when engaged, boosts the illumination 33%! Optional yellow filters can be placed over the bulbs to provide slightly softer illumination. The handle is equipped with a retractable support leg that can be used to balance the handle when used with larger lens heads.

Illumination: LED

Power Source: Electric

Bulb: LED (Never needs replacement)

H1599-600

COST \$225.00

To order call 440-946-3363 www.magnifiersandmore.net

MAGNIFIERS



A

B

G

MAGNIFICATION HEADS TO ADD TO HANDLES

These magnification heads are designed to rest on top of the reading material and are compatible with any of the four handle styles. The magnification heads are designed to mix and match the magnification power to your magnification needs, making them interchangeable. As the strength of the magnification increases, the viewing area of the magnification head will decrease. Magnification heads with the powers of 3x, 4x and 5x are fitted with a retractable red reading line.

MEHOA	A	3x	Head Only	Size 4 x 2"	COST \$135.00
MEHOB	B	4x	Head Only	Size 3-1/4"	COST \$100.00
MEHOC	C	5x	Head Only	Size 2-1/2" (not shown)	COST \$90.00
MEHOD	D	6x	Head Only	Size 2" (not shown)	COST \$82.00
MEHOE	E	7x	Head Only	Size 1-1/2" (not shown)	COST \$85.00
MEHOF	F	10x	Head Only	Size 1-1/2" (not shown)	COST \$86.00
MEHOG	G	12.5x	Head Only	Size 1-1/4"	COST \$105.00

To order call 440-946-3363 www.magnifiersandmore.net

MAGNIFIERS



1543

1544

1545

1546

REPLACEMENT LIGHT BULBS FOR HANDLES

1543

Incandescent bulb, 2.5 Volt
Illumination: Incandescent

1545

Incandescent bulb, 2.5 Volt
Illumination: Incandescent

B1543

COST \$4.00 each

B1545

COST \$5.00 each

1544

Incandescent bulb, 2.5 Volt
Illumination: Incandescent

1546

Halogen bulb, 4.0 Volt
Illumination: Halogen

B1544

COST \$8.00 each

B1546

COST \$14.00 each



To order call 440-946-3363 www.magnifiersandmore.net

MAGNIFIERS



RIM FREE MAGNIFIER



Hand held magnifier with rubber grip. Non-illuminated or LED illuminated. Lightweight and easy to use. Comes with soft pouch to protect lens. 2x
(Batteries included).

MRFNL No Light

COST \$21.00

MRFL LED Illuminated

COST \$25.00

Extra Batteries (3)

COST \$6.50



POCKET MAGNIFIER

Easy to carry and use. Acrylic lightweight lens. Available in square or tear drop shape. 3.5x

MPMT Tear Drop 2"

COST \$45.00

MPMS Square 2"

COST \$48.00



FOLDING LIGHTED MAGNIFIER

This unique product has a folding handle that swings in and out for convenient use and storage. The built-in LED light and popular 2" x 4", 3x lens enables reading in low-light conditions. Comes with protective storage case and the required one "AAA" battery. 3x.

MFLM

COST \$30.00

To order call 440-946-3363 www.magnifiersandmore.net

MAGNIFIERS



LARGEST ROUND MAGNIFIER AVAILABLE

This hand held round magnifier is five inches in diameter and has a bright LED light. The ergonomic handle makes it comfortable to hold. 2x with an inset bifocal of 6x. Uses 1 "AAA" battery (**not included**).

MR5NL

COST \$25.00



WALLET MAGNIFIER



Pocket or wallet magnifier is great for restaurants and reading maps. Easy to carry due to its ultra slim design. Comes with a soft pouch. Has a bright LED light. Replaceable button cell battery. 2x with a 6x bifocal insert.

MWAL

COST \$15.00



POCKET MAGNIFIER WITH LIGHT

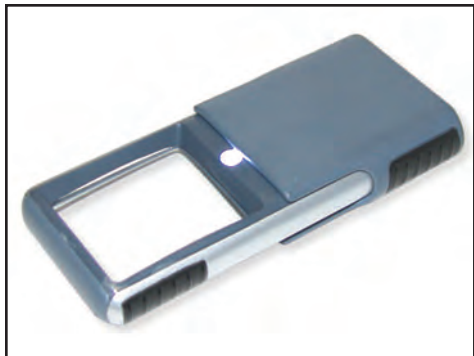
Compact power pop-out magnifier with a protective case. The built-in light makes it perfect for use in the dark. Great magnifier for reading menus and price tags. Uses 2 "AAA" batteries (**not included**). 5x

MPPO

COST \$12.00

To order call 440-946-3363 www.magnifiersandmore.net

MAGNIFIERS



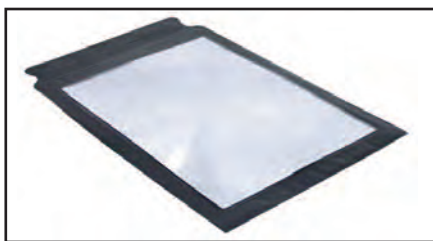
POCKET MAGNIFIER WITH LED LIGHT



Compact power pop-out magnifier with a protective case. The built-in LED light makes it the brightest pocket magnifier. Great magnifier for reading menus, price tags and labels. Requires 3 "AAA" batteries (**not included**). 2x

MPLED

COST \$12.00



SHEET MAGNIFIER

Flexible, plastic sheet that magnifies approx 2x. Size 8-1/2" by 11". Available with or without border. Sheet must be held above item to magnify.



MSM

COST \$5.00

MSMB (with border)

COST \$6.00

MSMRG (non-flexible)

COST \$10.00



FLEXILENS ON MINI-BASE

Weighted base has five holes enabling it to be pinned to a surface or simply left freestanding on any flat surface. Rimless lens on a flexible arm.

Lens: 3-1/2" diameter, 2.25x magnification

Bifocal Lens: 3/4" diameter, 4x magnification

MFMB

COST \$30.00

To order call 440-946-3363 www.magnifiersandmore.net

MAGNIFIERS



LONG FLEXILENS ON MINI CLIP

Ideal for clamping on to table or work area. Rimless lens on flexible arm.

Length arm: 10"

Lens: 3-1/2" diameter, 2.25x magnification

Bifocal Lens: 3/4" diameter, 4x magnification

MLFMC

COST \$32.00



FLEXILENS ON A BASE

A long flexible arm (18") with a large rimless lens. Weighted base keeps magnifier in place. Lens is 5" in diameter. 1.75x

MLFB

COST \$37.00



FLEXILENS ON MINI CLIP

Ideal for clamping on to table, light, books. Short flexible arm is 7". Rimless lens is 3.5". Lens power is 2.25x with a bifocal inset of 4x.

MFMCO

COST \$28.00

To order call 440-946-3363 www.magnifiersandmore.net

MAGNIFIERS



RIM FREE MAGNIFIER WITH BIFOCAL

A round 3.5 inch hand held rimless magnifier with 2.5x power and 2 bright white LED lights, and a rubberized ergonomic handle with a bifocal insert of 4x. Uses 2 "AA" batteries (**not included**).

MLRM5

COST \$26.00



RIM FREE MAGNIFIER - SQUARE

2x power hand held magnifier with bright white LED's and an ergonomically designed soft-grip rubber handle. A rimless, crystal-clear rectangular acrylic lens that gives you a sharp distortion-free view. (3 button batteries included).

MRM77

COST \$26.00



HAND HELD MAGNIFIER

2x power hand held magnifier with an ergonomically designed soft-grip handle for the ultimate in comfort. Its crystal-clear acrylic lens gives you a sharp distortion-free view, and a 10x high-power spot lens allows you to see even the finest details with ease. Diameter is 5".

MHSG5

COST \$19.00

To order call 440-946-3363 www.magnifiersandmore.net

MAGNIFIERS



RIM FREE MAGNIFIER ON A STAND

Hand held or hands free fully adjustable stand magnifier with built-in LED light that lets you see more detail. Its large acrylic 2x power lens provides sharp, crystal-clear images. Uses 2 "AA" batteries (**not included**).

MRFS

COST \$25.00



CLIP-ON GLASSES

Magnifying lenses that turn any pair of regular glasses into "flip-down" hands free magnifiers. Magnifier clips on your glasses like a clothespin. Great for hobbies, crafts or reading or in conjunction with another hand held magnifier or computer use. Included with the magnifying lenses is a pouch. Available in three powers: 1.50x, 1.75x, 2.25x. Size of glasses: 4-3/4" width, 1-1/2 height.

MCOG5	1.50x	COST \$17.50
MCOG7	1.75x	COST \$17.50
MCOG9	2.25x	COST \$17.50

To order call 440-946-3363 www.magnifiersandmore.net

MAGNIFIERS

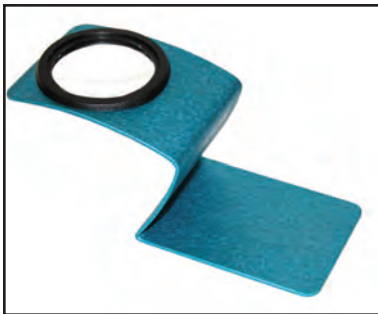


MAGNIFIER WITH LEGS

2.5x power hand held magnifier with an ergonomically designed soft-grip handle for the ultimate in comfort. A built-in, fold-out stand for "hands-free" use. Its crystal-clear acrylic lens gives you a sharp distortion-free view, and a 10x high-power spot lens allows you to see the finest details with ease.

MLEG

COST \$19.00



FLOATING MAGNIFIER

This 5x power stand loupe magnifier is an ideal magnifier for using as a jeweler's loupe, photographer loupe and printer's loupe. Lens is mounted in a metal stand.

MFLO

COST \$15.00



LOUPE STAND MAGNIFIER

10x power loupe stand magnifier. Pre-focused dual lenses allow examination of objects close-up, while a transparent acrylic base permits ambient light to illuminate the subject for bright, clear viewing. Size is 4" round, 3" height.

ML10

COST \$10.50

To order call 440-946-3363 www.magnifiersandmore.net

DISTANCE MAGNIFIERS



MONOCULAR 4X



Designed for distance viewing. Squeeze the outside casing and the monocular expands open. Squeeze again and it retracts back into its protective case. An additional feature includes the ability to use it in reverse so that it acts as a field expander, which will prove ideal for those with restricted visual fields.

Magnification: 4x

Lens Size: 16 mm

Case Material: Protected in a small, light plastic casing

Mount: Rubber exterior at grip prevents slipping

Lens Material: Achromatic glass with multi-coating

Dimensions: only 48 x 25 x 38 mm

Focal Range: 10 ft - infinity

Visual Field: 13 Degrees

M4294

COST \$168.00



To order call 440-946-3363 www.magnifiersandmore.net

DISTANCE MAGNIFIERS



MONOCULAR 6X

Designed for distance viewing. Just squeeze the casing once and the Microlux expands for use. Squeeze it again and it retracts. Portable, fits easily into a pocket or purse.

Magnification: 6x

Lens Size: 18mm

Case Material: Protected in a small, light plastic casing

Lens Material: Achromatic glass with multi-coating

Focal Range: 10 ft to infinity

Visual Field: 8 degrees

M42946

COST \$220.00



MAX DETAIL GLASSES

Hands-free, head-mounted glasses provide 2x magnification and are adjustable so that each eye lens can be focused separately. The glasses will focus on near objects with working distances of 16".

Magnification: 2x

Lens Size: 32mm

Case: Included

Lens Material: PXM Plastic

Temple Length: 135mm

Frame Size: 137mm

Working Distance: 16"

Visual Field: 20 degrees

MAXDETAILS

COST \$141.00

To order call 440-946-3363 www.magnifiersandmore.net

DISTANCE MAGNIFIERS



MONOCULAR 8X

This monocular Keplerian telescope for distance viewing provides a unique slide-focus mechanism designed for single-hand use. Keplerian design panoramic field of view of 8 degrees. Rubber coated for durability.

Magnification: Available in 6x or 8x

Lens Size: 16 mm

Case: Included (Leather)

Mount: Rubberized Coating

Lens Material: Achromatic glass with multi-coating

Focal Range: 1 meter to infinity

M42936 6x

COST \$245.00

M42938 8x

COST \$265.00



To order call 440-946-3363 www.magnifiersandmore.net

Electronic Magnification



COMPACT MINI

This small, lightweight, portable electronic magnifier with a 3.5" screen and collapsible reading stand magnifies from 2x to 11x. Five viewing modes and freeze frame functionality with conveniently placed controls gives you better sight right at your fingertips. Rechargeable battery and carrying case included.

MINI

COST \$395.00



COMPACT+

A larger version of the Compact Mini (see above), this electronic magnifier has a 4.3" screen with magnification steps of 5x, 7.5x and 10x. Five viewing modes, freeze frame functionality along with easy one button simplicity and collapsible hand grip for optimal reading convenience. Rechargeable battery and carrying case included.



COMP

COST \$595.00

PEBBLE

This ultra-portable video magnifier is the perfect companion whether you are traveling or at home. Adjustable magnification of 2x to 10x with either a 3.5" or 4.3" high resolution LCD display. Six viewing modes and easy-to-use tactile controls. Foldable and adjustable telescopic handle with comfort grip. Rechargeable battery and carrying case included.



PBBLE

COST 3.5" Screen \$570.00

PBBLE4

COST 4.3" Screen \$645.00

To order call 440-946-3363 www.magnifiersandmore.net

Electronic Magnification



MERLIN DESKTOP CCTV READING MACHINE

Stand alone reading machine for reading, writing, viewing photos and more. Magnification range from 2.7x to 77x (depending on screen size) with adjustable contrast and background colors. Basic functions are controlled with 3 buttons. Auto focus ensures objects are always in focus. Available in 19" or 22" color flat panel monitor.

MERLIN COST - CALL FOR PRICING



CLEARVIEW+ DESKTOP READING MACHINE

This unit is ideal for reading the newspaper, writing checks, sewing or viewing photos. Magnification range from 2.5x to 65x with adjustable contrast and background colors. Basic functions can be easily controlled with a single button. Auto focus ensures objects are always in focus. Available in 18.5", 19" or 22" color flat panel monitor.

CLEARV COST - CALL FOR PRICING



We carry a large selection of video magnifiers. Please call for our Video Magnifier Catalog or check out our website for a more comprehensive selection of devices.

To order call 440-946-3363 www.magnifiersandmore.net

MAGNIFYING MIRRORS



10X SUCTION SPOT MIRROR CUP

10x magnification optical quality mirror mounts to any mirror or any flat smooth surface. Great for home/purse/travel. Includes suction cups. 3-1/4" diameter

MM10xSS

COST \$10.00



TWO MIRRORS IN ONE

Suction cup mirror is two mirrors in one. Two powerful 6" mirrors; one end is 5x and the other end is 10x. An 11" flexible gooseneck extends & adjusts to any angle. Vanity & wall mount design with patented slide on suction cup mounting bracket. Available in chrome finish.



MMGN51

COST \$33.00

To order call 440-946-3363 www.magnifiersandmore.net

MAGNIFYING MIRRORS



SUCTION CUP MIRROR IN 5X OR 7X

Optical quality mirror is a suction cup style available in 5x or 7x magnification and is 7" in diameter. Attaches to any smooth surface with suction cups and has a clear acrylic frame around it.

MMSCM5x
MMSCM7x

COST \$15.00
COST \$20.00



SWIVEL MIRROR 9" DIAMETER

Swivel mirror has 5x magnification side and reverses to 1x magnification. 9" diameter optical quality mirror. Surrounded by a clear acrylic frame and base.

MMSM9

COST \$40.00



SWIVEL MIRROR IN 5X OR 7X

Swivel mirror is available in 5x or 7x magnification on one side with a 1x mirror on the other. 6-1/4" diameter optical quality mirror, clear acrylic finish.

MMSM65x
MMSM67x

COST \$20.00
COST \$25.00

To order call 440-946-3363 www.magnifiersandmore.net

MAGNIFYING MIRRORS



1X-10X LIGHTED SWIVEL HAND MIRROR

1x and rotates to 10x so the light can be used on both magnifications

- Dual LED lights
- Vanity stand to use on a counter top
- Use as a hand held mirror
- 6-1/4" optical quality glass
- Swivel 360 degrees
- Great for travel or at home
- Requires 3 "AAA" batteries (**not included**)

MM10xH

COST \$25.00



GOOSE NECK MIRROR

Features mirror with suction cup mounting or pedestal stand. Suctions to any flat smooth surface; adjustable gooseneck for easing viewing. 11 1/4" flexible gooseneck design allows you to put mirror in desired position/angle. Optical quality 6" break resistant mirror. Chrome and clear acrylic finish. Available in 5x or 7x.

MMGN5

COST \$26.00

MMGN7

COST \$28.00

To order call 440-946-3363 www.magnifiersandmore.net

MOBILITY AIDS



FOLDING ALUMINUM CANE

Heavy gauge aluminum cane. Folds up into 4 sections. Available in lengths 36" to 60", in 2" increments. White reflective cane with six inch red end. Mushroom tip.

MAFAC

COST \$30.00

(specify length when ordering)

LIGHTING



PORTABLE TABLE MAGNIFYING LAMP

Small lamp is 14" high with circular 12w daylight bulb (equiv. to 75w fluorescent) with a 3.5" lens. Magnification is 1.75x with a 4x insert. Lightweight and easy to move around; just plug into electric outlet.

LPTL

COST \$55.00

To order call 440-946-3363 www.magnifiersandmore.net

LIGHTING



FLOORSTANDING MAGNIFYING LAMP

Light and magnifying lens are mounted onto individual long flexible arms, enabling the most comfortable working positions to be found. Ideal for needlework, reading and other detailed tasks. Rimless lens gives a comfortable uninterrupted view. Can be used at a table or while sitting in an armchair. White.

Lens: Quality acrylic, 5" diameter 1.75x
Light Source: 18 watt daylight bulb
(included).

Some assembly required.

LFSML **COST \$200.00**
(additional shipping charge of \$15.00 for this item)



TABLE TOP MAGNIFYING LAMP

Light and magnifying lens are mounted onto individual long flexible arms for a comfortable working position. Rimless lens gives a comfortable uninterrupted view. Can be used at a table or work bench. White.

Lens: Quality acrylic, 5" diameter 1.75x magnification

Light Source: 18 watt bulb **(included).**

LTTML **COST \$120.00**

To order call 440-946-3363 www.magnifiersandmore.net

LIGHTING



DAYLIGHT TASK LAMP



Compact daylight simulation lamp. Lightweight. Open unit and light comes on, fold it and light goes off. Portable 13 watt low energy heat daylight simulation bulb. 110V. Available in white or silver.

LDTL

COST \$65.00



CLAMP-ON MAGNIFYING LAMP

7" diameter lens with approximately 1.75x magnification. Has a 28 watt low energy light bulb. Comes with table clamp and flexible arm. Ability to add stronger lenses.

LCOML

COST \$210.00

ACCESSORIES AVAILABLE FOR CLAMP-ON MAGNIFYING LAMP

5" diameter lens 2.25x magnification

LCL5

COST \$26.00

3" diameter lens 3x magnification

LCL3

COST \$27.00

Swing arm lens 1-1/2" diameter 4.75x magnification

LSA

COST \$28.00

These accessories are interchangeable with the original 7" diameter lens.

To order call 440-946-3363 www.magnifiersandmore.net

LIGHTING



CLAMP ON MAGNIFYING LAMP

Magnifying lamp 1.75x that clamps on to a table. Circular 22w daylight bulb (equiv. to 100w fluorescent bulb) with adjustable swing arm (arm length 28 inches) Available in two lens sizes. Supplied with table clamp and lens cover.

LC05L 5" diameter lens (1.75x)

COST \$85.00

LC07L 7" diameter lens (1.75x)

COST \$140.00

LSTAND Opt. Stand Accessory Add'l

COST \$125.00



HANDY LED FLASHLIGHT



The new CIipMate® is a small but durable clip-on flashlight that gives you the power of three super bright, 100,000 hour LEDs. This 360 degree rotating light is also convenient because its large clip allows easy attachment to almost anything. Up to 120 hours of battery life. Great to use at a restaurant or whenever extra light is needed.

LLF

COST \$20.00



12 LED Flashlight

The brightest flashlight available. Great for reading menus, adding that extra light when adjusting the thermostat. Four inches in length and comes with 3 "AAA" batteries.

LFL12

COST \$20.00

To order call 440-946-3363 www.magnifiersandmore.net

Glare Control Sunglasses



ESCHENBACH GLARE CONTROL GLASSES

A special glare control glass that is designed with absorptive filters specifically designed for the vision impaired. Blocks 100% UVA and UVB Light. Provides 40% extra protection because of the top and side shield design. Four tints to choose from (gray, yellow, orange, and amber). Gray polarized lenses decrease overall light transmission and reduce glare. Yellow, orange, and amber (brown) lenses decrease blue light transmission and increase contrast. Three frame sizes available. Comfortable fit due to bend-to-fit temples. Comes with a protective case. Glasses can be worn alone or over glasses.

Lens Material: Plastic

Frame: Plastic, Tortoise color

Tints: Gray, Yellow, Orange, Amber (Brown), Plum

Size: Small Fits over prescription frames not exceeding 5 1/2" wide x 1 5/8" high
 Size: Medium Fits over prescription frames not exceeding 5 3/8" wide x 1 7/8" high
 Size: Large Fits over prescription frames not exceeding 5" wide x 2" high

Glare Yellow	State Size on Order Form	COST \$46.00
Glare Gray	State Size on Order Form	COST \$46.00
Glare Orange	State Size on Order Form	COST \$46.00
Glare Amber	State Size on Order Form	COST \$46.00
Glare Plum	State Size on Order Form	COST \$46.00

To order call 440-946-3363 www.magnifiersandmore.net

Glare Control Sunglasses



Small fits frames
5" W x 1 1/2" H



Medium fits frames
5 1/4" W x 1 1/2" H



Large fits frames
5 7/16" W x 1 7/8" H



X-Large fits frames
5 1/2" W x 2" H

COCOONS

Cocoons are fashionable sunglasses that can be worn alone or fit over existing glasses to reduce glare and enhance contrasts. Wearing proper eye protection increases mobility and provides relief from light sensitivity.

- Scratch resistant Polarized lenses with 100% UV protection
- Soft flexible temples
- Case and Cloth included
- Several frame sizes to choose from
- Four frame colors to choose from

LLF

COST \$45.00

	LENS COLOR			
	Gray	Amber	Yellow	Copper
Black Frame	CBG	CBA	CBY	CBC
Sand Frame	CSG	CSA	CSY	CSC
Tortoise Frame	CTG	CTA	CTY	CTC
Burgundy Frame	CUG	CUA	CUY	CUC

Use the above code to order frame color and lens color.

Additional lens colors available on website.

To order call 440-946-3363 www.magnifiersandmore.net

MISCELLANEOUS AIDS

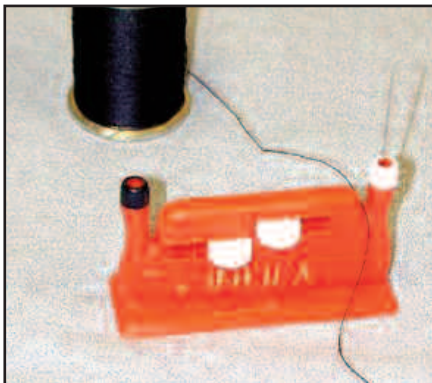


SUPER LARGE CALCULATOR

Excellent low vision calculator with one inch number buttons. Display screen can be angled up. Measures 8-1/2" wide by 11-1/2" long and 1/4" depth. Available in Silver or Black. Uses AG-13 batteries **(included)**.

MASLC

COST \$26.00



INFILA NEEDLE THREADER

Automatic needle threader that threads small or large needles with the push of a button.

MAINT

COST \$4.95



DOUBLE ENDED CLAMP



17" flexible clamp. A clamp is on each end. White color. Great for holding a magnifier so that hands are free.

MADEC

COST \$32.00

To order call 440-946-3363 www.magnifiersandmore.net

MISCELLANEOUS AIDS



MAGNIFYING TWEEZERS

A compact 4x magnifier with attached fine-point tweezers and bright LED light. This magnifier/tweezers combo is perfect for all those "little" jobs ... when you need an extra hand! It is extremely lightweight and can be used as an aid for everything from hobbies and crafts to getting out that pesky splinter.

MAMT

COST \$14.95



TACTILE LOCATOR DOTS

Tactile dots help to tactually mark stove, microwave, washer, computer, typewriter, etc. Smooth, raised tactile dots have an adhesive back for easy application. Does not damage product surface. 20 dots per package. Comes in three colors and sizes.

MATBRL

**Black, Round, Large
COST \$4.50**

MATBRM

**Black, Round, Medium
COST \$4.50**

MATBRS

**Black, Round, Small
COST \$4.50**

MATCRL

**Clear, Round, Large
COST \$4.50**

MATCRM

**Clear, Round, Medium
COST \$4.50**

MATCRS

**Clear, Round, Small
COST \$4.50**

MATO

**Orange, Small
COST \$4.50**



To order call 440-946-3363 www.magnifiersandmore.net

Remember	10X
Choosing	8x
The Right	6X
Power	5X
Of Your	4X
Magnifier	3X
Is Very	2X
Critical	1x

Use the above chart to determine approximately the amount of magnification you need to read with. The last line (critical) is the same size print of the small print in a newspaper article. The line that you can best read is approximately the amount of magnification needed in a magnifier. The higher the magnification power, the closer you must hold the magnifier to your eye. For example, using a 10x magnifier, you would hold the magnifier approximately one inch from the paper and two inches from your eye.

To order call 440-946-3363 www.magnifiersandmore.net

ORDER FORM

DESCRIPTION CODE	SIZE	QTY.	PRICE	TOTAL

Shipping Charges Based on Order Total

Most items are shipped via United States Post Office.

\$0.00 to \$50.00 \$6.95

\$50.01 to \$99.99 \$8.95

\$100.00 and above\$10.00

Order Total

Shipping

6.25% Sales Tax

TOTAL

* Additional postage may be necessary due to weight of product

Method of Payment

- Check
 - Visa / MasterCard / Discover
 - Money Order
- Make payable to Magnifiers & More

Credit Card # _____
 CC Security Code # _____
 Expiration _____
 Signature _____

Ship to:

Name _____
 Address _____

 City _____ State: _____
 Zip code _____
 Phone _____
 Email _____

**Mail orders to:
 Magnifiers & More
 7775 Mentor Ave
 Mentor, OH 44060
 440-946-3363
 OR
 Fax 440-946-8899**

To order call 440-946-3363 www.magnifiersandmore.net

NOTE FROM MURPHY



RETURNS

- No refund on shipping charges
- All refunds must be within 14 days of original purchase and must be in original condition
- Any item that shows signs of use or damage will not be refunded.
- Returns that are not in the original packaging and/or instructions are missing will be subject to a refund of 85% of the original price.
- A re-stocking fee may apply to special ordered products
- Please call for a Return Authorization Number

DEFECTIVE PRODUCTS

Any defective product must be returned for exchange within 30 days of purchase.

MURPHY'S BARK

All aids in this catalog are subject to price change and availability. We carry additional products not shown in the catalog. Our website contains the most current and up to date products. If you do not see an aid you need please call us as we may be able to special order it for you.

We are here to help you with all your low vision needs.

To order call 440-946-3363 www.magnifiersandmore.net